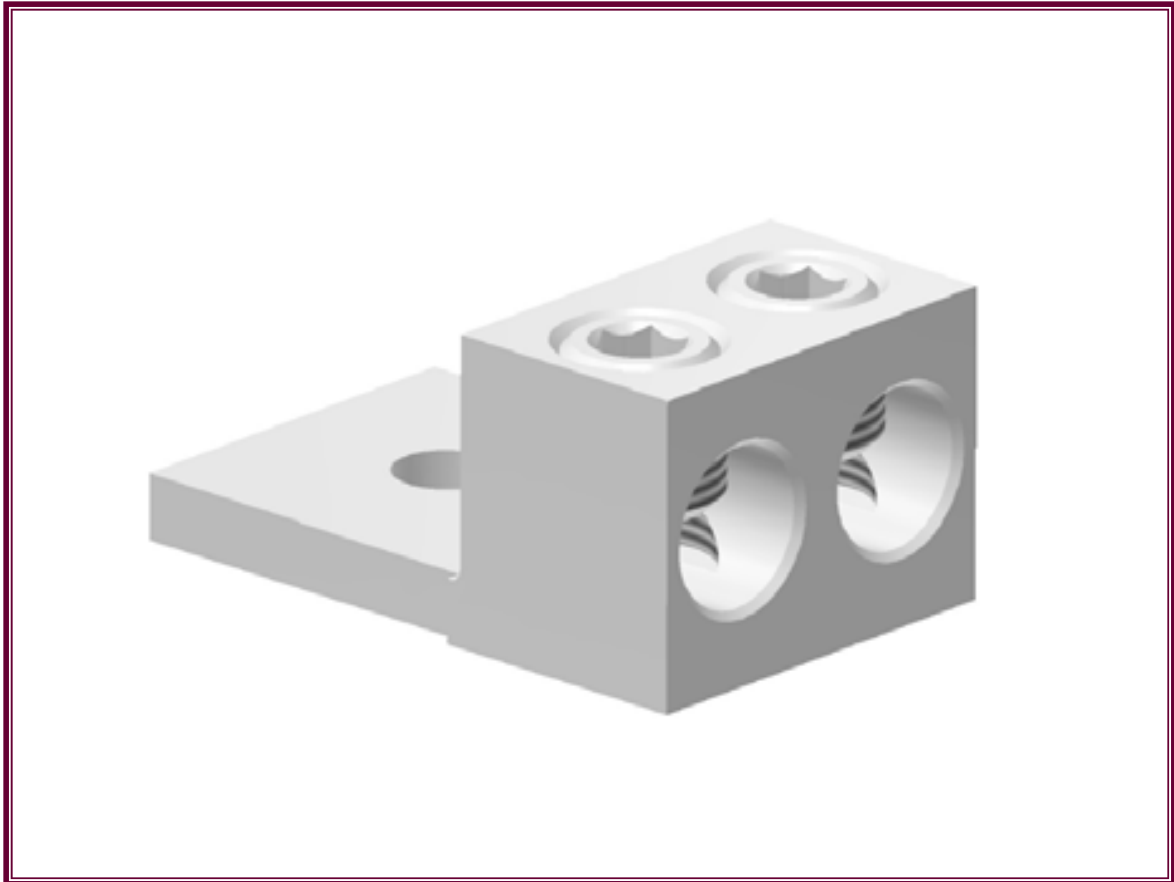




## *C-Line Electrical Components*

### *AL/CU Lugs*



New products are being added and updated regularly. Please email us at [info@durhamcompany.com](mailto:info@durhamcompany.com) and we'll notify you of new products & information as they become available.

(417) 532-7121

[www.lugsonline.com](http://www.lugsonline.com)

PO Box 1510 • 1601 Wyota Drive

Lebanon, MO 65536

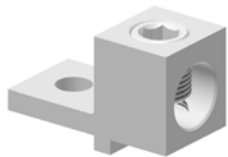
# C-Line Electrical Components

## SINGLE CONDUCTOR LUGS



CAT. NO.	WIRE RANGE		STUD SIZE	HEIGHT	WIDTH	LENGTH	SLOT OR HEX SIZE
	CU	AL					
TC0	14	1/0	1/4	25/32	5/8	1-15/32	SLOTTED
TC00	14	2/0	1/4	25/32	5/8	1-15/32	SLOTTED
TC250	250	6	3/8	1-1/16	1	1-15/16	5/16
TC350	350	6	3/8	1-1/8	1-1/8	2-1/8	5/16
TC500	500	4	1/2	1-1/2	1-3/8	2-3/4	1/2
TC600	600	4	1/2	1-1/2	1-3/8	2-3/4	1/2

## Single Conductor Lugs with Anti-Rotation Feature



CAT. NO.	WIRE RANGE		STUD SIZE	HEIGHT	WIDTH	LENGTH	HEX SIZE
	CU	AL					
TC0R	14	1/0	1/4	25/32	5/8	1-15/32	SLOTTED
TC00R	14	2/0	1/4	25/32	5/8	1-15/32	SLOTTED
TC250R	250	6	3/8	1-1/16	1	1-15/16	5/16
TC350R	350	6	3/8	1-1/8	1-1/8	2-1/8	5/16
TC500R	500	4	1/2	1-1/2	1-3/8	2-3/4	1/2
TC600R	600	4	1/2	1-1/2	1-3/8	2-3/4	1/2

- Suitable for use with copper or aluminum conductors
- Manufactured from high strength 6061-T6 aluminum alloy
- Electro-Tin plated to inhibit corrosion providing low contact resistance
- Provides premium electrical and mechanical performance
- 90° C Rated for 600V



*Most items are available in different combinations including stud sizes, hex sizes, etc. Please contact the factory for any variations needed.*

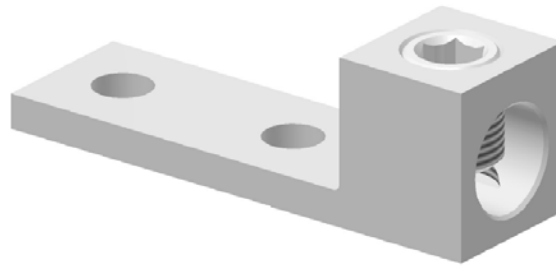
[www.lugsonline.com](http://www.lugsonline.com)

# C-Line Electrical Components

## MD SINGLE CONDUCTOR LUGS-TWO HOLE TANG



- Suitable for use with copper or aluminum conductors
- Manufactured from high strength 6061-T6 aluminum alloy
- Electro-Tin plated to inhibit corrosion providing low contact resistance
- Provides premium electrical and mechanical performance
- 90° C Rated for 600V
- Chamfered wire entry providing ease of installation
- UL Listed for use in US & Canada



CAT. NO.	WIRE RANGE CU-AL	STUD SIZE	HEIGHT	WIDTH	LENGTH	HEX SIZE
TC350-N	350-6	3/8	1-3/32	57/64	4-1/4	5/16
TC500-N	500-4	1/2	1-1/2	1-3/8	4-5/8	1/2
TC600-N	600-4	1/2	1-1/2	1-3/8	4-5/8	1/2

*Most items are available in different combinations including stud sizes, hex sizes, etc. Please contact the factory for any variations needed.*

[www.lugsonline.com](http://www.lugsonline.com)

PO Box 1510 • 1601 Wyota Drive

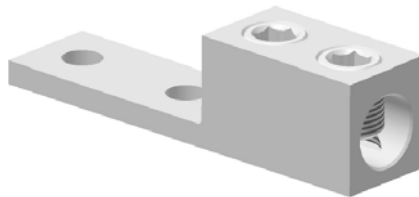
Lebanon, MO 65536

# C-Line Electrical Components

## HD SINGLE CONDUCTOR LUGS-TWO HOLE TANG



- Suitable for use with copper or aluminum conductors
- Manufactured from high strength 6061-T6 aluminum alloy
- Electro-Tin plated to inhibit corrosion providing low contact resistance
- Provides premium electrical and mechanical performance
- 90° C Rated for 600V
- Chamfered wire entry providing ease of installation
- UL Listed for use in US & Canada
- NEMA bolt hole spacing of 1-3/4"



CAT. NO.	WIRE RANGE		STUD SIZE	HEIGHT	WIDTH	LENGTH	HEX SIZE
	CU	AL					
TC250A-N	250	6	3/8	1	53/64	4-3/8	5/16
TC350A-N	350	6	3/8	1-3/32	57/64	4-1/2	5/16
TC500A-N	500	4	1/2	1-1/2	1-3/8	5-1/2	1/2
TC600A-N	600	4	1/2	1-1/2	1-3/8	5-1/2	1/2

*Most items are available in different combinations including stud sizes, hex sizes, etc. Please contact the factory for any variations needed.*

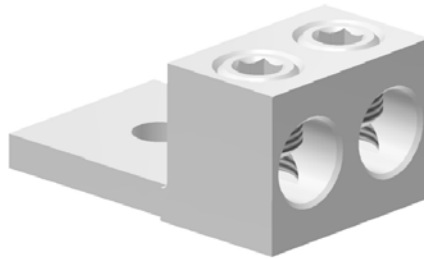
[www.lugsonline.com](http://www.lugsonline.com)

# C-Line Electrical Components

## TWO CONDUCTOR LUGS



- Suitable for use with copper or aluminum conductors
- Manufactured from high strength 6061-T6 aluminum alloy
- Electro-Tin plated to inhibit corrosion providing low contact resistance
- Provides premium electrical and mechanical performance
- 90° C Rated for 600V
- Chamfered wire entry providing ease of installation
- UL listed for use in US & Canada



CAT. NO.	WIRE RANGE		STUD SIZE	HEIGHT	WIDTH	TANG WIDTH	LENGTH	HEX SIZE
	CU	AL						
TC250-2	250	6	3/8	1-3/16	1-5/8	1-1/2	2-9/16	5/16
TC350-2	350	6	1/2	1-1/4	1-15/16	1-3/4	2-7/8	5/16
TC500-2	500	6	1/2	1-9/16	2-3/8	2	3-1/8	1/2
TC600-2	600	4	1/2	1-9/16	2-3/8	2	3-1/8	1/2

*Most items are available in different combinations including stud sizes, hex sizes, etc. Please contact the factory for any variations needed.*

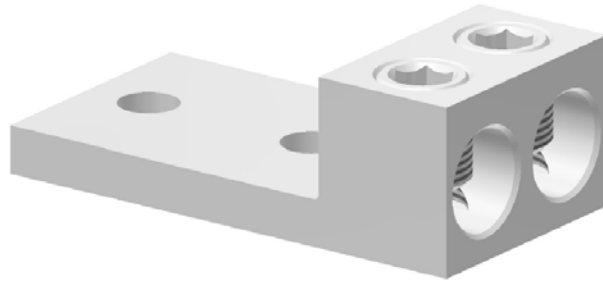
[www.lugsonline.com](http://www.lugsonline.com)

PO Box 1510 • 1601 Wyota Drive

Lebanon, MO 65536

# C-Line Electrical Components

## MD TWO CONDUCTOR LUGS-TWO-HOLE TANG



CAT. NO.	WIRE RANGE	STUD SIZE	HEIGHT	WIDTH	LENGTH	HEX SIZE
	CU-AL					
TC250-2N	250-6	3/8	1-3/16	1-5/8	3-3/4	5/16
TC350-2N	350-6	1/2	1-1/4	1-57/64	4-1/4	5/16
TC600-2N	600-4	1/2	1-9/16	2-3/8	4-11/16	1/2

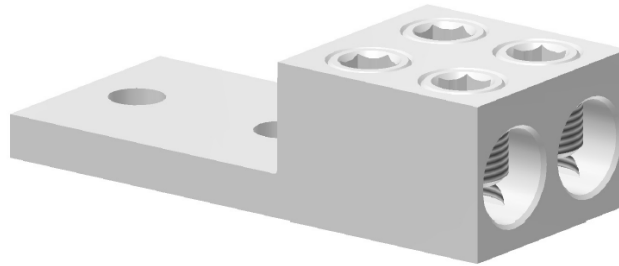
- Suitable for use with copper or aluminum conductors
- Manufactured from high strength 6061-T6 aluminum alloy
- Electro-Tin plated to inhibit corrosion providing low contact resistance
- Provides premium electrical and mechanical performance
- 90° C Rated for 600V
- Chamfered wire entry providing ease of installation

*Most items are available in different combinations including stud sizes, hex sizes, etc. Please contact the factory for any variations needed.*

[www.lugsonline.com](http://www.lugsonline.com)

# C-Line Electrical Components

## HD TWO CONDUCTOR LUGS-TWO-HOLE TANG



CAT. NO.	WIRE RANGE		STUD SIZE	HEIGHT	WIDTH	LENGTH	HEX SIZE
	CU-AL						
TC250A-2N	250-6		3/8	1-3/16	1-5/8	3-3/4	5/16
TC350A-2N	350-6		1/2	1-1/4	1-57/64	5-5/16	5/16
TC600A-2N	600-4		1/2	1-9/16	2-3/8	5-1/2	1/2

- Suitable for use with copper or aluminum conductors
- Manufactured from high strength 6061-T6 aluminum alloy
- Electro-Tin plated to inhibit corrosion providing low contact resistance
- Provides premium electrical and mechanical performance
- 90° C Rated for 600V
- Chamfered wire entry providing ease of installation

*Most items are available in different combinations including stud sizes, hex sizes, etc. Please contact the factory for any variations needed.*

[www.lugsonline.com](http://www.lugsonline.com)

PO Box 1510 • 1601 Wyota Drive

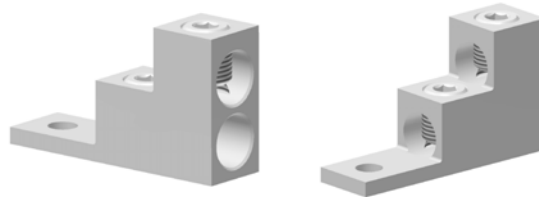
Lebanon, MO 65536

# C-Line Electrical Components

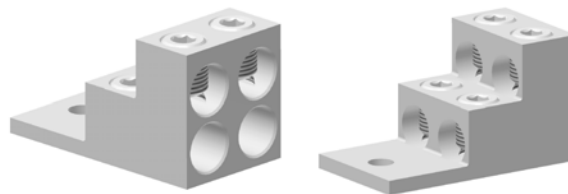
## STACKED TWO, THREE & FOUR CONDUCTOR LUGS



- Suitable for use with copper or aluminum conductors
- Manufactured from high strength 6061-T6 aluminum alloy
- Electro-Tin plated to inhibit corrosion providing low contact resistance
- Provides premium electrical and mechanical performance
- 90° C Rated for 600V
- Chamfered wire entry providing ease of installation



CAT. NO.	WIRE RANGE	STUD SIZE	HEIGHT	WIDTH	LENGTH	HEX SIZE
	CU-AL					
SC350-2	350-6	3/8	2	63/64	3-31/64	5/16



CAT. NO.	WIRE RANGE	STUD SIZE	HEIGHT	WIDTH	LENGTH	HEX SIZE
	CU-AL					
SC350-3	350-6	3/8	2	1-57/64	3-31/64	5/16
SC350-4	350-6	3/8	2	1-57/64	3-31/64	5/16

*Most items are available in different combinations including stud sizes, hex sizes, etc. Please contact the factory for any variations needed.*

[www.lugsonline.com](http://www.lugsonline.com)

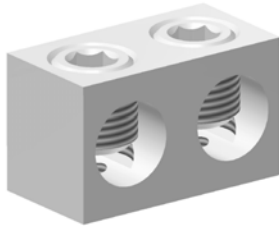


# C-Line Electrical Components

## NEUTRAL BAR CONNECTORS



- Suitable for use with copper or aluminum conductors
- Manufactured from high strength 6061-T6 aluminum alloy
- Electro-Tin plated to inhibit corrosion providing low contact resistance
- Provides premium electrical and mechanical performance
- 75° C Rated
- UL Recognized for use in US & Canada



\*Can be ordered in any number of positions.

CAT. NO.	WIRE RANGE	HEIGHT	WIDTH	LENGTH	SLOTTED OR HEX SIZE	MOUNTING
	CU-AL					
BC0-X	1/0-14	3/4	9/16	*	SLOTTED	(2) 10-32
BC00-X	2/0-14	3/4	9/16	*	SLOTTED	(2) 10-32
BC250-X	250-6	1	7/8	*	5/16	(2) 1/4-20

*When ordering, replace "X" with the number of required positions.*

*Length determined by number of positions.*

[www.lugsonline.com](http://www.lugsonline.com)

PO Box 1510 • 1601 Wyota Drive

Lebanon, MO 65536

[www.lugsonline.com](http://www.lugsonline.com)

PO Box 1510 • 1601 Wyota Drive

Lebanon, MO 65536